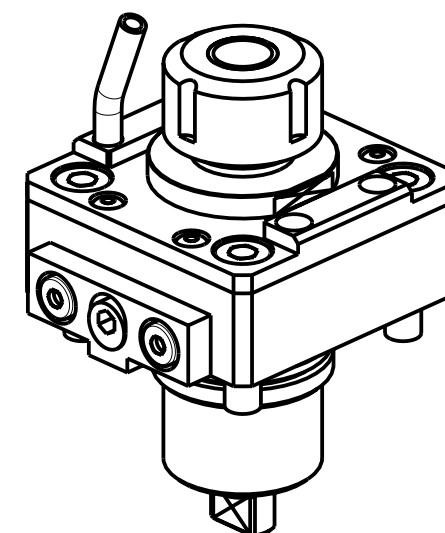
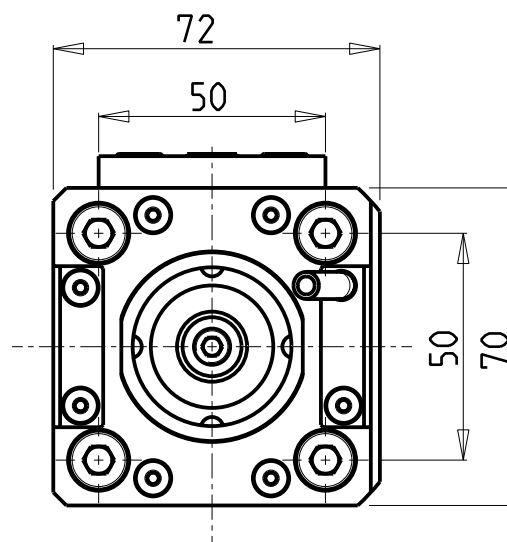
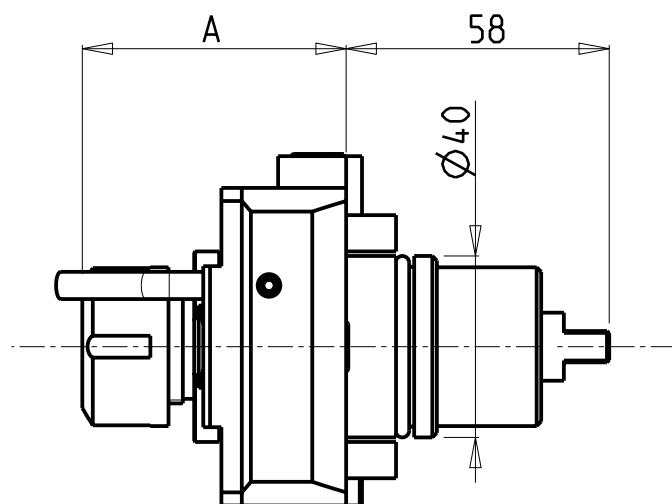


# CUSCINETTI MAGGIORATI PER LAVORAZIONI PESANTI

Reinforced bearings for  
heavy machining

Vergroesserte lager fuer  
schwerere Bearbeitungen



| Cod. MT    | Mandrino<br>Spindle<br>Spindel | I   | RPM  | Coppia Max<br>Max Torque<br>Max Drehmoment | Lubrificazione est.<br>Ext. coolant<br>Aussenkuehlung | A    | CHIAVI NON INCLUSE<br>Keys not included<br>Schluessel nicht einbegriffen |          |
|------------|--------------------------------|-----|------|--|---|------|--|----------|
| BGL1190320 | ER20                           | 1:1 | 6000 | 50Nm                                       | X   | 58.2 | OKU0290009   | CHSTER20 |
| BGL1190325 | ER25                           | 1:1 | 6000 | 50Nm                                       | X   | 59.2 | OKU0290009   | CHSTER25 |

|                          |
|--------------------------|
| • Chiave inclusa         |
| • Key included           |
| • Schluessel inbegriffen |

BIGLIA

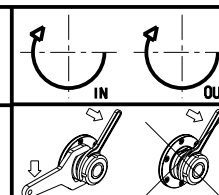
MOD: B436/438 - BMX 45Y2

MODULO MOTORIZZATO RADIALE MAGGIORATO

Radial reinforced driven tool

Radial angetriebenes Werkzeug vergroessert

Subject to change without notice.



**M.T. srl**  
Via Casino Albini 480  
Tel. 0541/956034-957884  
Fax 0541/956341  
47842 S. GIOVANNI IN M. (RN)  
e-mail: mtma@mtmarchetti.com  
http://www.mtmarchetti.com



BGL020-2-00

09/2024